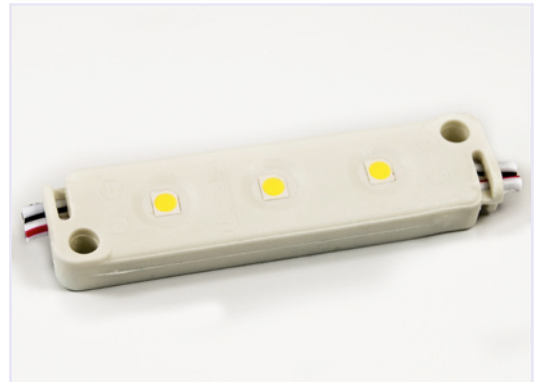


## FL1

### Product Features

The FL1 module is ideal for built up lettering that has a return depth of between 70mm - 120mm. This compact module will serve for narrow stroke widths where space is of a minimum. High pressure injection technology. 3528 SMD LED chip.



PRODUCT SPECIFICATIONS	
COLOUR	○ WHITE ○ WARM WHITE ● RED ● YELLOW ● GREEN ● BLUE
LED QUANTITY	3
POWER CONSUMPTION	0.3w Warm White, Neutral White, Green, Blue 0.33w Yellow, Red
VOLTAGE	12 VOLT DC
AMBIENT TEMPERATURE	-30°C to +85°C
DIMENSIONS (length x width x height)	48mm x 14mm x 6mm
VIEWING ANGLE	120°
IP RATING	IP 65
MODULE SPACING (centre to centre)	110mm
LED MODULES per METRE	10
MODULES POWERED BY A 30w DRIVER	90
MODULES POWERED BY A 60w DRIVER	180
MOUNTING	3M VHB ADHESIVE TAPE & MECHANICAL
MAXIMUM AMOUNT OF MODULES IN ONE RUN	50
LUMENS per MODULE	○ 24 ○ 24 ● 9 ● 3 ● 12 ● 7.8
SYSTEM CERTIFICATIONS	CE RoHS
COLOUR TEMPERATURE	○ 6000k ○ 3000k ● 620-625k ● 585-590k ● 535-530k ● 465-470k